

NEWSLETTER

ESF Abacus Kindergarten



PRINCIPAL'S MESSAGE

Dear Families,

We have come to the end of term 1 and everyone is ready for a well earned rest after a busy school term.

The last week has been really good fun, it was fantastic seeing so many parents in school for our celebration of learning and concert on Tuesday.

We have also had lots of fun with the school party and Santa visiting on Thursday. He brought all of the classes a new book to share and answered lots of questions about reindeer and making toys.

We are looking forward to the new term in January and already have plans for our Chinese New Year activities and celebrations.

Wishing you all a very Merry Christmas and a Happy New Year.



Important Dates Coming Soon

ASAP	Sign up for hearing screenings- details below.
Mon 6th Jan	School closed for new K1 play visits
Tues 7th Jan	Start of term 2 for K1 and K2 children
Fri 17th Jan	Hearing Screenings available- see below
Fri 24th Jan	Children's celebration for Chinese New Year. Parent volunteers invited- details to follow after the break.
Mon 27th Jan- Mon 3rd Feb	Chinese New Year holiday
Tues 4th Feb	School re-starts for children
Thurs 6th Feb	Whole School Theatre Trip

Planning ahead for term 2? Key dates are in the Google calendar now.



Frances Hurley



Hearing Screenings

We have arranged for the Ear, Nose, Throat Centre, <https://www.ear.com.hk/> to provide hearing screenings at Abacus on January 17th. If you have any concerns about your child's hearing or simply want to know that everything is okay you can sign up using the following link:

<https://www.eventbrite.hk/e/esf-abacus-hearing-screening-tickets-1054673088599>

The link gives more information about the screening and the price. On the day the children will be accompanied to the screening by one of the class teaching team.

Reports available

You will be now be able to view your child's latest report by accessing the Moodle via the ESF App. This report is a follow up to the parent teacher conferences you had in October, the recent celebrations of learning and complements the ongoing record of learning in the ePortfolio/Moodle.

You will find a description of the type of learning experiences your child accessed during this inquiry and a snapshot of your child's progress in comparison to focus end of year objectives.

If you have any questions please get in touch with Emily- emily.jeves@abacus.edu.hk



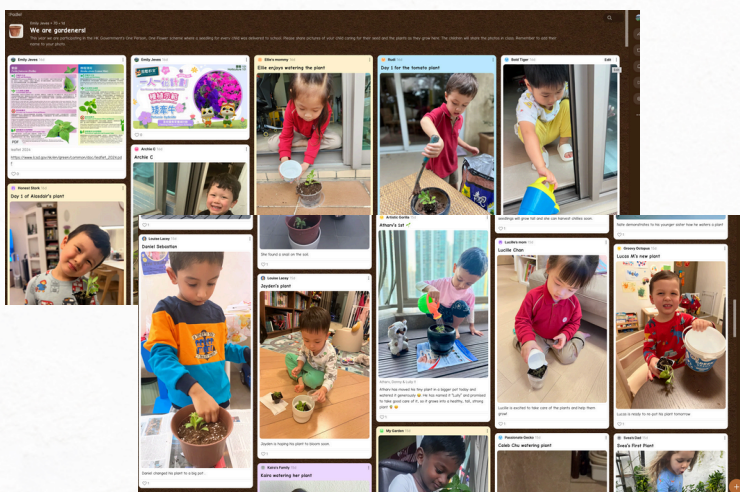
Tel: 27195712



kinder@abacus.edu.hk



We Are Gardeners!



We are enjoying hearing from the children about the growth of their plants that they received as part of; the HK Government's One Flower, One Person initiative. The children are also enjoying sharing the photos you have added to Padlet. We hope that you will continue to post as it is so valuable for the children to see how the children are being caring for their plants.
[We Are Gardeners Padlet.](#)

OUR PUBLIC CALENDAR LINKS

If you would like to add our public Google calendar to your devices, the link is here.

Google Calendar Link:

[https://calendar.google.com/calendar/embed?](https://calendar.google.com/calendar/embed?src=abacus.esf.org.hk_gkql7pdhhjpino3pg7cieg8ihg%40group.calendar.google.com&ctz=Asia%2FHong_Kong)

[src=abacus.esf.org.hk_gkql7pdhhjpino3pg7cieg8ihg%40group.calendar.google.com&ctz=Asia%2FHong_Kong](https://calendar.google.com/calendar/embed?src=abacus.esf.org.hk_gkql7pdhhjpino3pg7cieg8ihg%40group.calendar.google.com&ctz=Asia%2FHong_Kong)

Calendar ID: [abacus.esf.org.hk_gkql7pdhhjpino3pg7cieg8ihg@group.calendar.google.com](https://calendar.google.com/calendar/embed?src=abacus.esf.org.hk_gkql7pdhhjpino3pg7cieg8ihg%40group.calendar.google.com&ctz=Asia%2FHong_Kong)

iCal link:

https://calendar.google.com/calendar/ical/abacus.esf.org.hk_gkql7pdhhjpino3pg7cieg8ihg%40group.calendar.google.com/public/basic.ics



Tel: 27195712



kinder@abacus.edu.hk

ESF Explore Term 2

6th January to 6 April, 2025

Kickstart Your New Year by enhancing skills and discovering new passions! From sports to languages, arts, playgroups, and STEM, our experienced educators are dedicated to fostering your child's language, physical, cognitive, and artistic growth, ensuring they gain the confidence and adaptability to face future challenges with ease. Enrol Now!

Check out the complete programme listings [here](#)



OUR PUBLIC CALENDAR LINKS

If you would like to add our public Google calendar to your devices, the link is here.

Google Calendar Link:

[https://calendar.google.com/calendar/embed?](https://calendar.google.com/calendar/embed?src=abacus.esf.org.hk_gkql7pdhhjpino3pg7cieg8ihg%40group.calendar.google.com&ctz=Asia%2FHong_Kong)

[src=abacus.esf.org.hk_gkql7pdhhjpino3pg7cieg8ihg%40group.calendar.google.com&ctz=Asia%2FHong_Kong](https://calendar.google.com/calendar/embed?src=abacus.esf.org.hk_gkql7pdhhjpino3pg7cieg8ihg%40group.calendar.google.com&ctz=Asia%2FHong_Kong)

Calendar ID: [abacus.esf.org.hk_gkql7pdhhjpino3pg7cieg8ihg@group.calendar.google.com](https://calendar.google.com/calendar/ical/abacus.esf.org.hk_gkql7pdhhjpino3pg7cieg8ihg%40group.calendar.google.com/public/basic.ics)

iCal link:

https://calendar.google.com/calendar/ical/abacus.esf.org.hk_gkql7pdhhjpino3pg7cieg8ihg%40group.calendar.google.com/public/basic.ics



Tel: 27195712



kinder@abacus.edu.hk