

14th February 2025

ESF
英基

Abacus

NEWSLETTER

ESF Abacus Kindergarten



PRINCIPAL'S MESSAGE

Dear Families,

We hope you had a lovely Chinese New Year holiday and enjoyed our community theatre trip last week.

All staff from across ESF attended the ESF conference last week and I am very excited to share the video which opened the conference we starred four children from Abacus. Thank you to Francis, Lara, Nico and Kirat for their acting contributions. Have a look at the video below. The video also included children from Clearwater Bay school and Shatin college.



Have a lovely weekend.
Kind Regards,



Frances Hurley

Important Dates

Week of 24th February	K1 Celebration of Learning- details via App message
Week of 3rd March	Parent teacher conferences- details emailed by class teams
10th March	K2E HK Forest Adventures Trip- see Gateway eNotice
11th March	K2B HK Forest Adventures Trip- see Gateway eNotice
20th March	K1E HK Forest Adventures Trip- information coming soon
21st March	K1B HK Forest Adventures Trip
31st March	Vision screenings available- please see below
3rd April	Staff Meeting School Closes for Easter until 22nd April



ESF New Websites

All of the ESF schools websites have been completely rebuilt and have a fresh new look and feel.

The sites consist of a marketing set of pages aimed at giving information to prospective and current parents. They also contain a new parents section which can be found by clicking the Students and Parents link at the top of the marketing website. The aim is to provide current parents with the information they may need. This is part of a larger ESF IT strategy where we will shortly be replacing some of our other legacy systems.

We have written some basic content for these pages but would like to hear your feedback on what would be useful to see on these pages. Please take a look and feedback any comments or ideas to frances.hurley@abacus.edu.hk



Marketing Pages

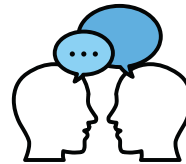


Parent Pages



New Parent Handbook

We have also updated our parent handbook to go along with the new website. Please take a look here and tell us what you think.



PARENT TEACHER CONFERENCES

Our next parent teacher conferences will be held during the week of the Monday 3rd March and are an important part of our assessment and reporting process.

You will have already received information from your child's class teacher about how to sign up via a Google booking system for your class's day.

This 10-minute conversation about your child's progress at school will be a chance to discuss your child's strengths and hear some possible next steps to help them become more independent learners. You'll also have a chance to share your observations from home or ask questions.

Please do let your child's teacher know if the appointment times are not possible for you as the conversations are an important part of us working in partnership.



Tel: 27195712



kinder@abacus.edu.hk



THE POWER OF EARLY INTERVENTION

This leaflet is designed to provide you with essential information about how we support your child's unique learning journey at Abacus. By understanding our approach to personalised programs and early intervention, you can better navigate your child's developmental needs and discover how we can work together to empower their growth. We encourage you to read on to learn about the resources and support available to help your child thrive.

Early Intervention- information for parents



OUR AIMS AT ABACUS

At Abacus, we prioritise building strong relationships with children to understand strengths. This helps us create personalised programmes tailored to their need instead of weaknesses—areas where children are still developing. Think of sit-stands and stretches as construction zones, needing more attention but when assessing children's stretches, we consider their developmental approach affect participation in our learning community. We value each child's unique to diversity it brings. Our teachers adapt learning experiences daily to meet individual needs. Some

- Modified resources
- Tools for better focus
- Flexible seating arrangements
- Small group support
- Visual aids and schedules

We believe in universal support strategies that benefit all children, such as using to help everyone understand emotions. In some cases, we work with families to create intervention plans with specific

The importance of therapy

We offer screenings for various areas of development, including speech and occupational therapy to help identify children's learning stretches. These screenings are a private arrangement between families and parents. Teachers may recommend screenings if they notice challenges. Screenings provide valuable insights into your child's progress and how we can support their learning. If therapy is suggested, it's important to consider the recommendations. Early therapy can help create new neural pathways and teach vital skills. Delaying therapy may mean missing opportunities for growth.

It helps with social communication and improves children's listening skills. It is also important to note that while you may understand everything that your child says that might not be the case at school. When we are familiar with someone's way of articulating or joining words together we often fill in the gaps almost subconsciously. It is important that your child can communicate confidently at school to share their understanding and outcomes.

Why is occupational therapy recommended if my child excels in activities like swimming and building with Lego?

OT can help young children develop: Fine Motor Skills: Enhancing hand-eye coordination and dexterity which are an important part of early literacy. Sensory Processing: Supporting children in understanding and responding to sensory information, which can improve focus and behaviour. Self-regulation: Teaching strategies to manage emotions and behaviours in different environments. Social Skills: Managing interactions with peers and improving communication skills. Daily Living Skills: Assisting with routines like dressing, eating, and personal hygiene. For the team at Abacus the development of self regulation and sensory processing skills is often a driver for the suggestion of occupational therapy. We recognise that things often look different at home but that is because the demands placed on your child as a learner at school can be very different.

Common questions from parents

My child speaks confidently at home. Why consider speech therapy?

If your child is a confident speaker at home, speech and language therapy can still be beneficial. It addresses various aspects of communication, including enhancing vocabulary, sentence structure, and understanding of complex language.



VISION SCREENINGS

Vision screenings will be run out of Abacus on 31st March. Please click on the image below to read the details and use the link to schedule your child a time if you choose to.

ESF Int Kindergarten Abacus Vision Screening Programme



Monday 31st March 2025

Does your child see properly? Are you sure that your child sees equally well with both eyes?

Why is it important for my child to have regular eye examinations? Children with uncorrected visual conditions can face many barriers, academically, socially and athletically. Your child's vision is developing during the first 7 to 8 years of life. Small visual problems can interrupt this development and lead to permanently reduced vision (lazy eye, or amblyopia) if not detected during this critical time.



Amblyopia is reduced vision, when the brain favours one eye over the other, usually due to uneven focusing or when the eyes are misaligned. Lazy eye responds well to treatment before the age of 7, after this time the brain cells have stopped developing and can not be stimulated to improve poor vision, and the lazy eye becomes permanently impaired.

cause eye strain, headaches and a reluctance for close work. Can I borrow your car, Mum?



Colour Vision About 8% of males and 1% of females are colour deficient, with red/green problems being the most common. Usually hereditary, colour vision problems can not be cured but those affected can be taught to adapt, as many learning materials are colour coded. Can you see the boat?



How do we screen vision?

It's fun! You do not have to read the alphabet to have an eye test! Young children can match or name shapes or letters on distance and near charts. Binocular vision is assessed using following and focusing tasks with toys and lights and 3-D charts. Colour Vision is measured using patterns of coloured dots in recognizable shapes or pictures.

Binocular Vision

Eyes which work together well give good depth judgment, important for such diverse tasks as writing, catching a ball, pouring water into a container, stepping off the curb, judging oncoming traffic, and driving. A lack of binocular vision can

<https://www.eventbrite.co.uk/e/vision-screening-at-esf-abacus-on-monday-31st-march-2025-registration-1243203608459?aff=oddttdcreator>

Your child will be accompanied to the screening by a familiar member of the Abacus teaching team.

OUR PUBLIC CALENDAR LINKS

If you would like to add our public Google calendar to your devices, the link is here.

Google Calendar Link:

https://calendar.google.com/calendar/embed?src=abacus.esf.org.hk_gkql7pdhhjpin03pg7cieg8ihg%40group.calendar.google.com&ctz=Asia%2FHong_Kong

Calendar ID: [abacus.esf.org.hk_gkql7pdhhjpin03pg7cieg8ihg@group.calendar.google.com](https://calendar.google.com/calendar/ical/abacus.esf.org.hk_gkql7pdhhjpin03pg7cieg8ihg%40group.calendar.google.com/public/basic.ics)

iCal link:

https://calendar.google.com/calendar/ical/abacus.esf.org.hk_gkql7pdhhjpin03pg7cieg8ihg%40group.calendar.google.com/public/basic.ics



Tel: 27195712



kinder@abacus.edu.hk